



The Best Warranty in the Industry

MetalBest Chimney & Venting Systems feature advanced engineering designs and premium materials which allow us to offer a Lifetime Warranty.

See written warranty for details.

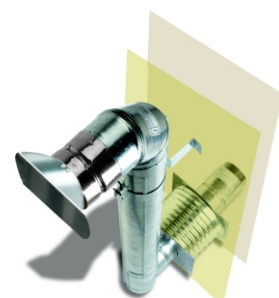
All HEARTH Products Are Not Created Equal.



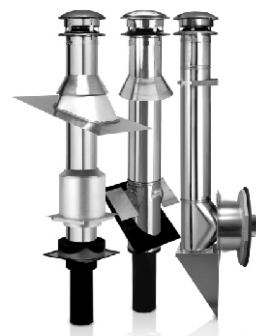
Aluminum Chimney Liners



Stainless Steel Chimney Liners



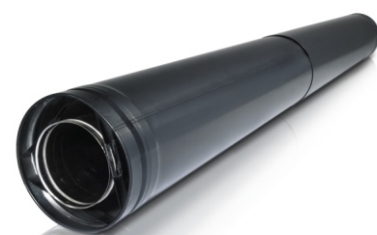
Pellet-Pipe



Insulated Chimney Systems



Stove Pipe



Direct Vent Pipe
for Gas, Pellet, or Multi Fuel

Complete Product Lines to Meet Your Market Needs!

HVAC Products

AirMate:

Registers
Grilles
Diffusers

Chimney:

Ultra-Temp
Ultra-Temp Large
Galva-Temp
Galva-Temp Large

Venting:

Direct-Temp / Gas
RV & QC Type B Gas Vent
Flexi-Liner
Versa-Liner
Saf-T Vent Special Gas Vent

Smart air & energy solutions

UV Lights
Residential Zoning
Energy Recovery Ventilator

Hearth Products

Chimney:

Ultra-Temp
Ultra-Temp Large
Galva-Temp
Galva-Temp Large

Fireplaces:

MAX! HE

Venting:

Direct-Temp / Gas
Direct-Temp / Pellet
Direct-Temp / Multi-Fuel
Double Wall Stove Pipe
Saf-T Pipe
VP Pellet Pipe
Flexi-Liner
Versa-Liner
Saf-T Liner



375 Green Road,
Stoney Creek, ON L8E 4A5
Toll Free: 1.888.SELKIRK (735.5475)

SELKIRK

www.selkirkcorp.com

email:info@selkirkcorp.com



Reduce, Reuse, Recycle
Our literature is printed on
recyclable paper

5030 Corporate Exchange Blvd.
Grand Rapids, MI 49512
Toll Free: 1.800.433.6341

PLB HEARTH-001-E- R&B 3844 May-09

METALBEST

CHIMNEY & VENTING SYSTEMS

CHIMNEY



- All-Fuel Chimney Systems
- High-Temp Chimney Systems

VENTING



- Direct Vent
- Stove Pipe
- Pellet Pipe
- Aluminum Flex Liner
- Stainless Steel Liner

FIREPLACES



- Wood Burning Fireplaces



HEARTH

METALBEST

CHIMNEY & VENTING SYSTEMS

CHIMNEY

For all your Hearth, chimney and venting needs!



ALL FUEL & HI-TEMP CHIMNEY SYSTEMS (Stainless)

Ultra-Temp
Usage: Ultra-Temp is designed as an All-Fuel Chimney for use with wood, oil, gas or coal fired heating appliances

Ultra-Temp Large
Usage: Ultra-Temp Large is designed to be used for large masonry fireplaces

Sizes: Ultra-Temp is available in 5", 6", 7", 8", 10", 12" and 14" diameters
Ultra-Temp Large is available in 16", 18", 20", 22" and 24" diameters

Listing: 5" to 8" is Certified to UL103HT
10" to 24" is Certified to UL103

Materials:

- Stainless Steel outer casing
- Ultra-Temp and Ultra-Temp Large both have 1" Solid Pack Insulation

- Features & Benefits:**
- Easy assembly
 - Locking Band included - assures secure connection under all conditions
 - Solid Pack Insulation - augured for better insulating value (than blanket insulation) to keep outside temperatures low for safety and inside temperatures high for performance



ALL FUEL & HI-TEMP CHIMNEY SYSTEMS (Galvanized)

Galva-Temp
Usage: Galva-Temp is designed as an economical All-Fuel Chimney for use with wood, oil, gas or coal fired heating appliances

Galva-Temp Large
Usage: Galva-Temp Large is designed as an economical All-Fuel Chimney for use with large custom masonry fireplaces

Sizes:

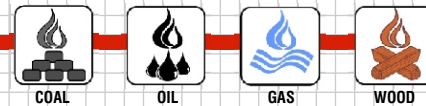
- Galva-Temp is available in 5", 6", 7", 8", 10", 12" and 14" diameters
- Galva-Temp Large is available in 16", 18", 20", 22" and 24" diameters

Listing: 5" to 8" is Certified to UL103HT
10" to 24" is Certified to UL103

Materials:

- Galvanized Steel outer casing
- Galva-Temp and Galva-Temp Large both have 1" Solid Pack Insulation

- Features & Benefits:**
- Twist-Lock Connection - easy assembly
 - Locking Band included - assures secure connection under all conditions
 - Solid Pack Insulation - augured for better insulating value (than blanket insulation) to keep outside temperatures low for safety and inside temperatures high for performance



VENTING

DIRECT VENT

DIRECT-TEMP / GAS Model DT
Usage: Direct Vent system for use with Gas Fireplaces, Inserts and stoves

Sizes: Direct-Temp is available in 4" x 5-5/8" and 5" x 8" diameters

Listing: Direct-Temp is Omni, ITS/Warnock Hersey or CSA tested and accepted for use with most major brands of direct vent appliances

Materials:

- 304 Stainless Steel inner liner
- Black or Galvanized outer casings

- Features & Benefits:**
- Siliconized fiberglass seal
 - 304 stainless welded seam inner flue
 - LockTab security
 - Pipe rotates easily to align system components
 - No sealant required
 - High efficiency performance



DIRECT VENT

DIRECT-TEMP / PELLET Model DT
Usage: Direct Vent system for use with Pellet or Corn burning stoves

Sizes: Available in 4"/7" diameter.

Materials:

- 304 Stainless Steel inner liner

- Features & Benefits:**
- Siliconized fiberglass gasket
 - LockTab joint security
 - High efficiency performance
 - Pipe rotates easily to align system components
 - No sealant required
 - 1" clearance to combustibles



DIRECT VENT

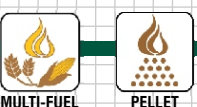
DIRECT-TEMP / MULTI-FUEL Model DT
Usage: Direct Vent system for use with Multi-Fuel stoves

Sizes: Available in 3"/5" or 4"/7" diameter.

Materials:

- AL 29-4C with built-in seal

- Features & Benefits:**
- Converts any conventional corn-burning or multi-fuel stove into a Direct Vent system.
 - 1" clearance to combustibles



PELLET PIPE

Model VP
Usage: MODEL VP is used for venting pellet or corn burning stoves approved for use with PL-Vent. The appliance's flue gases must not exceed 570° F (298.80° C). VP Pellet Pipe is designed for use with Pellet or Corn burning stoves

Sizes: 3" and 4" diameters

Materials:

- Black or Galvanized outer casings
- 304 Stainless Steel inner liner
- 1/4" air space insulation

- Features & Benefits:**
- Gasketed joint design
 - Full line of fittings & pipe lengths increase installation flexibility.
 - Proven coupling joint connects in seconds to assure joint integrity
 - Rolled-over male end eliminates sharp edges
 - 1" clearance to combustibles
 - Removable tee cap for inspection and cleaning
 - Internal spacing bead assures uniform insulating air space between pipe walls



STAINLESS STEEL LINER

SAF-T LINER
Usage: Stainless Steel Rigid Chimney for reline of existing chimneys. Designed for use with wood, oil, gas or coal appliances

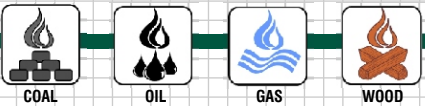
Sizes: 5" to 8" diameters

Listing: UL1777

Materials:

- 24 ga. Stainless Steel

- Features & Benefits:**
- Heavy-duty construction
 - Available in 304 Stainless Steel for wood burning or 316 Stainless Steel for coal
 - 1" clearance to combustibles
 - Optional safety wrap insulation



DOUBLE WALL STOVE PIPE

Model DSP
Usage: DSP is Double Wall Black Stove Pipe designed for use as a connector pipe between the woodstove and chimney system

Sizes: 6", 7" & 8"

Listing: Tested to UL103

Materials:

- Black Aluminized Steel outer casing
- Stainless Steel inner liner

- Features & Benefits:**
- 6" clearances to combustibles
 - Lasts significantly longer than single wall stove pipe
 - High quality scratch resistant black finish
 - Adjustable lengths mean no cutting pipe to fit your installation



STOVE PIPE

SAF-T PIPE
Usage: Saf-T Pipe is heavy-duty Single Wall Black Stove Pipe designed for use as a connector pipe between the wood stove and chimney system

Sizes: 5", 6", 7" and 8" diameters

Materials:

- Heavy duty 22 ga. stove pipe

- Features & Benefits:**
- Laser and Advanced Resistance-welded seams
 - Full range of parts and sizes
 - Beaded for furnace cement
 - High-temperature, low-luster black finish
 - Individually wrapped and packaged



ALUMINUM FLEX LINER

FLEXI-LINER® Model AFCL
Usage: Flexible Aluminum Chimney Liner for reline of existing chimneys serving Category I gas-fired heating appliances

Sizes: 3" to 8" diameters

Listing: UL 1777 Liners for existing Masonry and Factory-Built Chimneys and Vents

Materials:

- Liner - Aluminum 3003, 2-ply (0.005" each)

- Features & Benefits:**
- Maximum Flue Gas Temperature of 470°F
 - Available in convenient 25' and 35' Kits (15' Kits available for 3", 4" and 5" diameters)
 - 5:1 Stretch ratio.
 - Clearances: 0" between liner and chimney interior
0" between combustible materials and chimney exterior



STAINLESS STEEL LINER

VERSA-LINER Model RF
Usage: All-Stainless Steel Rigid/Flex system designed for use with wood, oil, gas or coal appliances. Versa-Liner is the most versatile Stainless Steel Chimney re-lining system on the market. Use it as a Rigid Liner, Flex Liner or a combination of both Rigid & Flex

Sizes: 5" to 8" diameters

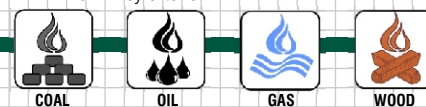
Clearance to Combustibles: 0" between liner & chimney interior

Listing: UL1777

Materials:

- Rigid Liner - 0.016 Type 304 Stainless Steel
- Flex Liner - 316 Stainless Steel

- Features & Benefits:**
- Use the same component parts with either Rigid or Flex
 - Use Versa-Liner FLEXIBLE lengths where offsets are required
 - Use Versa-Liner RIGID lengths inside straight chimneys
 - Available in kits or individual component parts
 - Optional one-piece Insulation blanket to wrap the liner system
 - Stainless Flashing with 24" x 24" base
 - Swivel Tee with 14" snout



FIREPLACES

MAX! WOOD BURNING FIREPLACES

The **Bordeaux** is a High Efficiency, EPA certified heater. Low emissions are achieved through a High Tech design to reduce maintenance and cost. Bordeaux contains many impressive design features, such as a Cast front face, Single or Double Door options and the ability to duct heat to other rooms. Use either 6" or 7" A-Vent Chimney.

The **Merlot** is a Smaller High Efficiency unit with new low-emission technology. Ceramic Glass doors smoothly fold back into the side of the fireplace - the unit may operate with doors fully open. The natural flow heat ducts attach to the top of the fireplace and allow heat to be directed to a different room - or the same room with the Fireplace. A central heating option also allows the fireplace to tie into furnace ducting and heat the entire house. Use 6" A-Vent Chimney.

The **Chardonnay** is a Mid Efficiency Heat Circulating Zero Clearance unit featuring a full 36" Hearth opening, Tilt-up cast iron grate for easy maintenance. Add attractive Two-door design or Two-door spark screen. Use 7" A-Vent Chimney. 7" A-Vent Chimney provides an enhanced draft, reduced condensation and smaller framing size than air-cooled systems.

- Features & Benefits:**
- Unit is 38-1/8" wide x 40" high x 24-1/8" deep
 - Heats up to 2,000 sq. ft. with a heat output of up to 45,000 BTUs and 8 to 10 hour Burn time
 - Large 3.0 cubic ft. firebox holds 22" logs
 - EPA approved at 5.7 g/hr (non-catalytic)

- Features & Benefits:**
- Unit is 34-1/2" wide x 33" high x 25" deep
 - Heats up to 2,000 sq. ft. with a heat output of up to 37,000 BTUs and 8 to 10 hour Burn time
 - Large 2.0 cubic ft. firebox holds 16" logs
 - EPA approved at 4.0 g/hr (non-catalytic)

- Features & Benefits:**
- Unit is 40" wide x 39" high x 24" deep
 - Large 3.0 cubic ft. firebox holds 16" logs
 - 50% efficiency

