



WOOD STOVES AND INSERTS



PACIFIC ENERGY FIREPLACE PRODUCTS LTD.



Pacific Energy wood stoves and fireplace inserts are easy to light, easy to use, economical and clean-burning. Lower your heating costs with one of the most efficient and beautiful wood stoves and inserts available today.

With three sizes of free-standing wood stoves, Pacific Energy has a solution for your heating needs. Robust heat is matched with decorating options, in both pedestal and classic leg styles and a variety of doors and industry-leading porcelain color options.

For those with an existing fireplace, choose from three sizes of fireplace inserts and striking design options to warm your home beautifully.

SMALL

For heating
up to
1500 sq ft. *

MEDIUM

For heating
up to
2000 sq ft. *

LARGE

For heating
up to
3000 sq ft. *

*
Heating capacity will
vary depending on
type of wood, floor
plan, house layout,
heat loss of home,
and geographical
location.

CONTENTS

Efficient Wood Heating is good for the Environment.....	4-5
Product Overview.....	6
Features, Choices & Options.....	7
Vista Classic.....	8
Vista.....	9
Spectrum Classic.....	10
Spectrum.....	11
Super 27.....	12-13
Super Step Top.....	14
Fusion.....	15
Summit Classic	16
Summit	17
Pacific Energy Fireplace Inserts	18
Super Insert	19
Vista Insert	20
Summit Insert.....	21
A History of Innovation	22-23
Porcelain – The Classic Touch.....	24-25
Floor Protectors	26
Minimum Clearances.....	27



Efficient Wood Heating is good for the Environment














Wood heat is a responsible choice and is a renewable and sustainable fuel source which does not contribute to global warming. When wood is burned as a substitute for fossil fuels, the result is a net reduction in CO2 emissions.

By choosing a Pacific Energy wood-stove and responsible wood heating, you are making a difference. For over 30 years, a strong dedication to the environment and woodheat science has made Pacific Energy a recognized leader in hearth product innovation and clean burn technology. Our unique firebox design and stainless steel encapsulated baffle system burn clean and efficiently with results meeting and exceeding US EPA and CSA emission standards, and industry recognized LHV (lower heating value) efficiency test methods.

Improving environmental performance and energy efficiency continues to be Pacific Energy's primary focus, giving you peace of mind that heating your home with a Pacific Energy Wood Stove or Insert means choosing a green home heating solution.



PACIFIC ENERGY - PRODUCT OVERVIEW

<p>SMALL</p> <p>The VISTA Series</p> <p>For Heating up to 1500² ft.</p> <p>Firebox size: 1.5 Cubic ft.</p>	<p>VISTA CLASSIC</p>   <p>Available in 9 colours</p>	<p>VISTA With Legs or Pedestal</p>  
<p>MEDIUM</p> <p>The SUPER Series</p> <p>For Heating up to 2000² ft.</p> <p>Firebox size: 2.1 Cubic ft.</p>	<p>SPECTRUM CLASSIC & SPECTRUM</p>    <p>Available in 9 colours</p>	<p>SUPER 27 With Legs or Pedestal</p>  
<p>LARGE</p> <p>The SUMMIT Series</p> <p>For Heating up to 3000² ft.</p> <p>Firebox size: 3.0 Cubic ft.</p>	<p>SUPER STEP TOP With Legs or Pedestal</p>  	<p>THE FUSION Available in Brushed Stainless Steel or Metallic Black</p>  
<p>SMALL</p> <p>The VISTA INSERT</p>	<p>MEDIUM</p> <p>The SUPER INSERT</p>	<p>LARGE</p> <p>The SUMMIT INSERT</p>

CHOICES

9 Porcelain Colours and 3 Trivet finishes for all Classic Models



SUNSET RED



EBONY



COFFEE BEAN BROWN



TITANIUM



IVORY



COPPER



GOLD



NICKEL



METALLIC BLACK



FOREST GREEN*



ROYAL BLUE*



BLACK PEARL *

* Available as premium colour

4 Finishes for Doors and Legs

All Pacific Energy Wood Stoves (except The Fusion) are customizable in your choice of door and leg finishes.

Available in Gold, Nickel, Metallic Black and Brushed Nickel.

Doors for the insert models are also available in these four finishes.

Two door styles, Arched and Radiant, are available only for the Spectrum and Super series.



2 Finishes for THE FUSION

The FUSION is finished in your choice of Brushed Stainless Steel for that contemporary style or the sleek look of Metallic Black.



OPTIONS

Screen Doors

Expand your burning season with a Screen Door, sized to fit all Pacific Energy Wood Stoves and Wood Inserts.

Black Metallic finish with double handle design for easy placement and removal. Existing door may remain in place during Screen Door use.



Ash System

Ash disposal is clean and easy with a removable ash drawer and is a **standard feature on all the Classic models and The Fusion.**

It is available as an optional extra for the VISTA, SUPER 27, SUPER STEP TOP and SUMMIT.



Blowers

Temperature actuated 125 cfm variable speed blowers are available for all stove models. 80 cfm and 160 cfm variable speed blowers are standard features on Inserts.



Visit

BUILD-MY-STOVE

www.pacificenergy.net



The Vista Classic

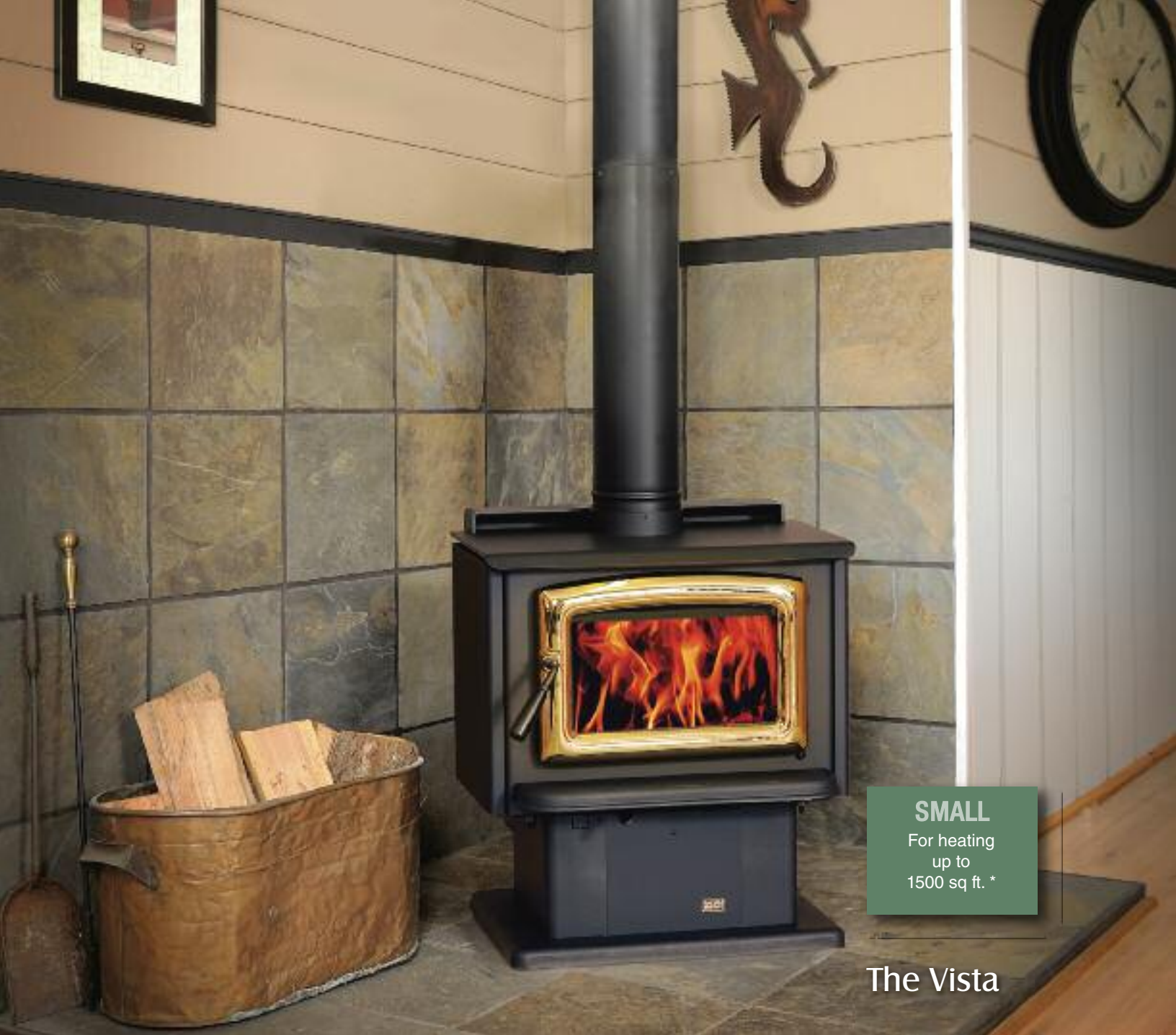
The Vista Classic – the elegant, yet powerful heating choice for spaces up to 1500 square feet. Classic good looks in a range of durable and beautiful Porcelain Enamel colors along with your choice of door, leg and trivet finishes.

STANDARD FEATURES ■ OPTIONS ■ CHOICES ■

Reliable, durable non-catalytic technology
User friendly, one-touch operation
Air wash system for super clean ceramic glass
Easy to use ash disposal system
High-tech multi-port combustion air injection system
Inside and outside combustion air capable
Floating firebox for extended stove life
Porcelain Enamel finish
Heavy plate-steel top under decorative top
Steel baffle and 304 Stainless Steel insulation cover
Boost air for easy lighting
Mobile home approved
125 cfm temperature actuated variable speed blower
Screen doors
Legs available in four finishes
Arched Door available in four finishes
Classic Trivet available in three finishes

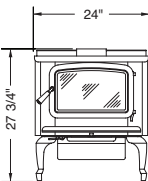
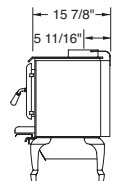
HEAT OUTPUT	Cord Wood	56,000 BTU
	EPA Test Fuel	26,300 BTU
Efficiency (LHV)		80.7%
Emissions		2.9 gm/hr.
Log Size		18 inches Max.
Wt. 285 lbs		

* Heating capacity will vary depending on type of wood, floor plan,



SMALL
For heating
up to
1500 sq. ft. *

The Vista

HEAT OUTPUT	Cord Wood	56,000 BTU
	EPA Test Fuel	26,300 BTU
Efficiency (LHV)		80.7%
Emissions		2.9 gm/hr.
Log Size		18 inches Max.
<div><div></div><div></div><div>Wt. 274 lbs</div></div>		

STANDARD FEATURES	OPTIONS	CHOICES
Reliable, durable non-catalytic technology		
User friendly, one-touch operation		
Air wash system for super clean ceramic glass		
High-tech multi-port combustion air injection system		
Inside and outside combustion air capable		
Floating firebox for extended stove life		
Rich Metallic Black finish with black trim		
Heavy plate-steel top		
Steel baffle and 304 Stainless Steel insulation cover		
Boost air for easy lighting		
Mobile home approved		
Easy to use ash disposal system		
125 cfm temperature actuated variable speed blower		
Screen doors		
Metallic Black Pedestal Base		
Legs available in four finishes		
Arched Door available in four finishes		

Don't be fooled by its modest dimensions. The Vista is designed to efficiently heat smaller homes, yet is big on performance, incorporating many of the outstanding features of the larger Super Series woodstoves - powerful heat output, high efficiency rating, and user friendly operation.



The Spectrum Classic

The Spectrum Classic, featuring the proven Super Series firebox, delivers easy-to-light, easy-to-load clean-burning performance. Elegantly clad in a choice of nine colors of rich porcelain enamel, the Spectrum Classic allows fantastic design control with a selection of leg, door, and trivet finishes.

STANDARD FEATURES ■ OPTIONS ■ CHOICES ■

■ Reliable, durable non-catalytic technology
■ User friendly, one-touch operation
■ Air wash system for super clean ceramic glass
■ Easy to use ash disposal system
■ High-tech multi-port combustion air injection system
■ Inside and outside combustion air capable
■ Floating firebox for extended stove life
■ Easy and safe front to back fuel loading
■ Porcelain Enamel finish
■ Heavy plate-steel top under decorative top
■ 304 Stainless Steel baffle, insulation cover, rails and flame shield
■ Boost air for easy lighting
■ Mobile home approved
■ 125 cfm temperature actuated variable speed blower
■ Screen doors
■ Legs available in four finishes
■ Arched Door available in four finishes
■ Radiant Door available in four finishes
■ Classic Trivet available in three finishes

HEAT OUTPUT	Cord Wood	72,000 BTU
	EPA Test Fuel	34,600 BTU
Efficiency (LHV)		82.6%
Emissions		3.4 gm/hr.
Log Size		18 inches Max.



MEDIUM
For heating
up to
2000 sq ft. *

The Spectrum

STANDARD FEATURES ■ OPTIONS ■ CHOICES ■

HEAT OUTPUT	Cord Wood	72,000 BTU
	EPA Test Fuel	34,600 BTU
Efficiency (LHV)		82.6%
Emissions		3.4 gm/hr.
Log Size		18 inches Max.

Reliable, durable non-catalytic technology
User friendly, one-touch operation
Air wash system for super clean ceramic glass
Easy to use ash disposal system
High-tech multi-port combustion air injection system
Inside and outside combustion air capable
Floating firebox for extended stove life
Easy and safe front to back fuel loading
Porcelain Enamel finish
Heavy plate-steel top under decorative top
304 Stainless Steel baffle, insulation cover, rails and flame shield
Boost air for easy lighting
Porcelain Finish Pedestal Base
Mobile home approved
125 cfm temperature actuated variable speed blower
Screen doors
Arched Door available in four finishes
Radiant Door available in four finishes
Classic Trivet available in three finishes

Sitting atop a pedestal base, the Spectrum wood stoves are beautifully finished with a rich porcelain enamel, and offer a choice of arched or radiant doors and trivets. User friendly, one touch operation and clean, efficient wood heat make the Spectrum an excellent choice for heating up to 2000 square feet.

house layout, heat loss of home, and geographical location.



MEDIUM

For heating
up to
2000 sq ft. *

The Super 27

Our most popular model, the Super 27 is the epitome of industry-leading innovation, giving you easy lighting, easy loading and effective heating in a mid-sized stove. Available with pedestal or legs and a variety of door finishes, the Super 27 delivers years of clean-burning and economical comfort.

STANDARD FEATURES OPTIONS CHOICES

Reliable, durable non-catalytic technology
User friendly, one-touch operation
Air wash system for super clean ceramic glass
High-tech multi-port combustion air injection system
Inside and outside combustion air capable
Floating firebox for extended stove life
Easy and safe front to back fuel loading
Rich Metallic Black finish with black trim
Heavy plate-steel top
304 Stainless Steel baffle, insulation cover, rails and flame shield
Boost air for easy lighting
Mobile home approved
Easy to use ash disposal system
125 cfm temperature actuated variable speed blower
Screen doors
Metallic Black Pedestal Base
Legs available in four finishes
Arched Door available in four finishes
Radiant Door available in four finishes

HEAT OUTPUT	Cord Wood	72,000 BTU
	EPA Test Fuel	34,600 BTU
Efficiency (LHV)		82.6%
Emissions		3.4 gm/hr.
Log Size		18 inches Max.





The Super Step Top

MEDIUM
For heating up to 2000 sq ft. *

Built around Pacific Energy’s industry-leading Super Series firebox, The Super Step Top boasts a heavy dual level cook-top for convenient use of surface heat. Available with pedestal or legs, the Super Step Top delivers real heat power with Pacific Energy’s renowned clean burning technology.

HEAT OUTPUT	Cord Wood	72,000 BTU
	EPA Test Fuel	34,600 BTU
Efficiency (LHV)		82.6%
Emissions		3.4 gm/hr.
Log Size		18 inches Max.
<div> <div> Wt. 387 lbs </div> <div> </div> </div>		

STANDARD FEATURES ■ OPTIONS ■ CHOICES ■

■	Reliable, durable non-catalytic technology
■	User friendly, one-touch operation
■	Air wash system for super clean ceramic glass
■	High-tech multi-port combustion air injection system
■	Inside and outside combustion air capable
■	Floating firebox for extended stove life
■	Easy and safe front to back fuel loading
■	Rich Metallic Black finish with black trim
■	Heavy plate-steel top
■	304 Stainless Steel baffle, insulation cover, rails and flame shield
■	Boost air for easy lighting
■	Mobile home approved
■	Easy to use ash disposal system
■	125 cfm temperature actuated variable speed blower
■	Screen doors
■	Metallic Black Pedestal Base
■	Legs available in four finishes
■	Arched Door available in four finishes
■	Radiant Door available in four finishes

* Heating capacity will vary depending on type of wood, floor plan,



The Fusion

MEDIUM

For heating
up to
2000 sq ft. *

STANDARD FEATURES ■ OPTIONS ■ CHOICES ■

HEAT OUTPUT	Cord Wood	72,000 BTU
	EPA Test Fuel	34,600 BTU
Efficiency (LHV)		82.6%
Emissions		3.4 gm/hr.
Log Size		18 inches Max.

Technical drawing of a wood stove showing front and side views with dimensions:

- Front View Dimensions:
 - Width: 22 1/4"
 - Height: 35"
- Side View Dimensions:
 - Depth: 23 1/2"
 - Firebox Depth: 8 3/8"
- Weight: Wt. 375 lbs

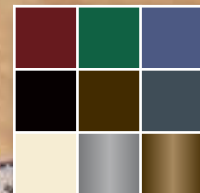
■	Reliable, durable non-catalytic technology
■	User friendly, one-touch operation
■	Air wash system for super clean ceramic glass
■	Easy to use ash disposal system
■	High-tech multi-port combustion air injection system
■	Inside and outside combustion air capable
■	Floating firebox for extended stove life
■	Easy and safe front to back fuel loading
■	Heavy plate-steel top
■	304 Stainless Steel baffle, insulation cover, rails and flame shield
■	Boost air for easy lighting
■	Mobile home approved
■	125 cfm temperature actuated variable speed blower
■	Screen doors
■	Finished in Brushed Stainless Steel or Metallic Black

Form meets function – The Fusion stands taller than most woodstoves with the firebox positioned above the uniquely styled wood storage compartment. Available in either stainless steel or metallic black finish, the Fusion blends Pacific Energy’s Hi-Tech firebox with the modernism of simple, clean design.



LARGE

For heating
up to
3000 sq ft. *



The Summit Classic

The Summit Classic Wood Stove has the power to keep you warm and comfortable throughout the night. With nine porcelain enamel colors, door and leg options, and three trivet finishes to select from, the Summit Classic is the ultimate choice in big heat for up to 3000 square feet.

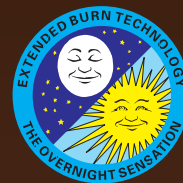
STANDARD FEATURES ■ OPTIONS ■ CHOICES ■

Reliable, durable non-catalytic technology
User friendly, one-touch operation
Air wash system for super clean ceramic glass
Easy to use ash disposal system
High-tech multi-port combustion air injection system
Inside and outside combustion air capable
Floating firebox for extended stove life
Easy and safe front to back fuel loading
Porcelain Enamel finish
Heavy plate-steel top under decorative top
304 Stainless Steel baffle, insulation cover, rails and flame shield
Boost air for easy lighting
Extended Burn Technology (EBT)
Mobile home approved
125 cfm temperature actuated variable speed blower
Screen doors
Legs available in four finishes
Arched Door available in four finishes
Classic Trivet available in three finishes

HEAT OUTPUT	Cord Wood	97,000 BTU
	EPA Test Fuel	37,501 BTU
Efficiency (LHV)		80.3%
Emissions		3.56 gm/hr.
Log Size		20 inches Max.

EBT

(Extended Burn Technology)



A Summit loaded with wood will keep you warm for up to 10 hours, thanks to Extended Burn Technology (EBT). A Patented innovation available only on Pacific Energy Summit Wood Stoves and Summit Inserts, EBT regulates combustion air flow, for a longer burn and more fuel economy.

LARGE

For heating
up to
3000 sq. ft. *

The Summit

STANDARD FEATURES ■ OPTIONS ■ CHOICES ■

HEAT OUTPUT	Cord Wood	97,000 BTU
	EPA Test Fuel	37,501 BTU
Efficiency (LHV)		80.3%
Emissions		3.56 gm/hr.
Log Size		20 inches Max.

Technical drawing of the Summit wood stove showing front and side views with dimensions. The front view shows a width of 25 1/2" and a height of 31 1/2". The side view shows a depth of 23 1/2" and a base depth of 8 1/2".

Wt. 435 lbs

Reliable, durable non-catalytic technology
User friendly, one-touch operation
Air wash system for super clean ceramic glass
High-tech multi-port combustion air injection system
Inside and outside combustion air capable
Floating firebox for extended stove life
Easy and safe front to back fuel loading
Rich Metallic Black finish with black trim
Heavy plate-steel top
304 Stainless Steel baffle, insulation cover, rails and flame shield
Boost air for easy lighting
Extended Burn Technology (EBT)
Mobile home approved
Easy to use ash disposal system
125 cfm temperature actuated variable speed blower
Screen doors
Metallic Black Pedestal Base
Legs available in four finishes
Arched Door available in four finishes

Crafted for maximum heating capacity, maximum burn time and maximum view of your wood fire, the Summit answers the call for a highly effective wood stove for bigger spaces and colder, longer nights. Available with pedestal or legs and a variety of door finishes, the Summit will welcome you in the morning with a glowing fire.



PACIFIC ENERGY FIREPLACE INSERTS

Pacific Energy Fireplace Inserts heat homes beautifully and efficiently. Made with Pacific Energy's superbly engineered floating fireboxes, each insert is designed to slow the combustion process and force warm air back into the room. Wood is burned at a higher temperature for a longer period of time, creating more heat from less wood. And unlike an open fire, you control the heat output. Each Pacific Energy Insert comes complete with a simple, easy to use one-touch control.



MEDIUM
For heating
up to
2000 sq ft. *

The Super Insert

HEAT OUTPUT	Cord Wood	72,000 BTU
	EPA Test Fuel	34,600 BTU
Efficiency (LHV)		82.6%
Emissions		3.4 gm/hr.
Log Size		18 inches Max.

Technical drawing of a fireplace insert showing dimensions:

- Overall height: 42 5/8"
- Depth: 10"
- Overall width (Oversize surround): 44 3/8"
- Internal width (Oversize surround): 21 1/2"
- Internal width: 23 3/4"
- Height of lower section: 19 9/16"
- Height of upper section: 33"
- Depth of lower section: 5"
- Width of lower section: 20 3/4"
- Width of upper section: 28 7/8"
- Width of base: 18"
- Weight: Wt. 342 lbs.

STANDARD FEATURES	OPTIONS	CHOICES
Reliable, durable non-catalytic technology		
User friendly, one-touch operation		
Air wash system for super clean ceramic glass		
High-tech multi-port combustion air injection system		
Inside and outside combustion air capable		
Floating firebox for extended stove life		
Easy and safe front to back fuel loading		
Rich Metallic Black finish with black trim		
Heavy plate-steel top		
304 Stainless Steel baffle, insulation cover, rails and flame shield		
Boost air for easy lighting		
160 cfm temperature actuated variable speed blower/s		
Screen doors		
Mantel shield		
Arched Door available in four finishes		
Radiant Door available in four finishes		
Embossed surround, standard size		
Flat surround, oversize		
Surround trim available in 3 finishes (Gold, Nickel, Metallic Black)		

Pacific Energy's best selling wood insert lets you enjoy efficient heating without losing the ambience of an open fire. The Super Insert, with its large, ceramic glass door gives you the full comfort and view of your log fire. Transform your drafty fireplace in an easy-to-light, easy-to-load reliable source of heat.



SMALL

For heating
up to
1500 sq ft. *

The Vista Insert

The Vista Insert, the perfect solution for truly efficient, easy wood heat in smaller masonry or factory-built fireplaces. Pacific Energy's user-friendly design means controllable heat and a great view of your wood fire. Standard variable speed fan, clean glass "air wash system", floating firebox and heavy construction mean years of heating comfort.

STANDARD FEATURES OPTIONS CHOICES

Reliable, durable non-catalytic technology	
User friendly, one-touch operation	
Air wash system for super clean ceramic glass	
High-tech multi-port combustion air injection system	
Inside and outside combustion air capable	
Floating firebox for extended stove life	
Rich Metallic Black finish with black trim	
Heavy plate-steel top	
Steel baffle and 304 Stainless Steel insulation cover	
Boost air for easy lighting	
80 cfm temperature actuated variable speed blower	
Screen doors	
Mantel shield	
Arched Door available in four finishes	
Embossed surround, standard size	
Flat surround, oversize	
Surround trim available in 3 finishes (Gold, Nickel, Metallic Black)	

HEAT OUTPUT	Cord Wood	56,000 BTU
	EPA Test Fuel	26,300 BTU
Efficiency (LHV)	80.7%	
Emissions	2.9 gm/hr.	
Log Size	18 inches Max.	

Technical drawing of the Vista Insert showing dimensions. The drawing includes a side view and a front view. Dimensions include: 36 1/2" height, 14 1/2" width, 23 3/16" depth, 9 3/4" width, 42 1/2" height (Oversize surround), 29 1/4" height (Oversize surround), 14 1/2" width, 19 3/4" height, 26 1/4" height, 14 1/2" width, 19 3/4" height, 29 1/4" height (Oversize surround), 14 1/2" width, 19 3/4" height, 29 1/4" height (Oversize surround). A note indicates "Wt. 255 lbs".



EBT
(Extended Burn Technology)

LARGE
For heating
up to
3000 sq ft. *

The Summit Insert

HEAT OUTPUT	Cord Wood	97,000 BTU
	EPA Test Fuel	37,501 BTU
Efficiency (LHV)		80.3%
Emissions		3.56 gm/hr.
Log Size		20 inches Max.

Technical drawing of the Summit Insert showing front and side views with dimensions.

Front View Dimensions:

- Overall Height: 48 3/4"
- Top Width: 12 1/4"
- Body Width: 34 5/8"
- Base Width: 26 1/4"
- Internal Diameter: ø6" ID
- Top Flange Height: 52 3/4" (Oversize surround)

Side View Dimensions:

- Overall Height: 62 3/4" (Oversize surround)
- Top Flange Width: 6 1/16"
- Body Width: 17 3/4"
- Base Width: 34" (Oversize surround)
- Bottom Height: 23 1/8"
- Front Panel Height: 32"

Weight: Wt. 465 lbs

STANDARD FEATURES	OPTIONS	CHOICES
Reliable, durable non-catalytic technology		
User friendly, one-touch operation		
Air wash system for super clean ceramic glass		
High-tech multi-port combustion air injection system		
Inside and outside combustion air capable		
Floating firebox for extended stove life		
Easy and safe front to back fuel loading		
Rich Metallic Black finish with black trim		
Heavy plate-steel top		
304 Stainless Steel baffle, insulation cover, rails and flame shield		
Boost air for easy lighting		
Extended Burn Technology (EBT)		
160 cfm temperature actuated variable speed blower/s		
Screen doors		
Arched Door available in four finishes		
Embossed surround, standard size		
Flat surround, oversize		
Surround trim available in 3 finishes (Gold, Nickel, Metallic Black)		

Face the challenge of heating your bigger space head on with the Pacific Energy Summit Insert. The Summit is the only insert with patented Extended Burn Technology, giving you up to ten hours of burn for a full night of heat. The Summit's extremely efficient Heat Extraction System transfers the maximum amount of heat to your room, over the longest time



A History of Innovation

For more than 30 years Pacific Energy has challenged, then exceeded the traditional assumptions about wood heat. Our history of innovation is evident in our industry-leading features, our choice of the finest materials, our close eye on environmental responsibility, and our commitment to creating efficient and convenient appliances that fit your style and warm your life.

The result is a series of industry firsts, accomplished through our on-going mission to provide you with the best possible wood burning technology.



First Glass Air Wash System

– because a beautiful fire should be seen



First Floating Firebox Design

– longer stove life with unrestricted thermal expansion

First Air Tight Ash Removal System

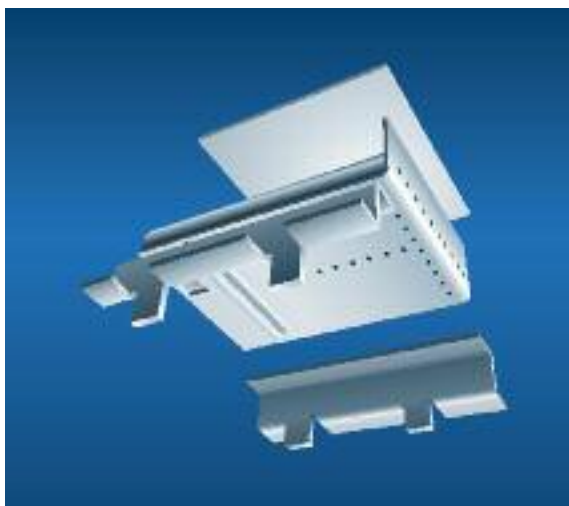
– for quick, clean maintenance of your stove

First Extended Burn Technology

– maximum efficiency for longer burns

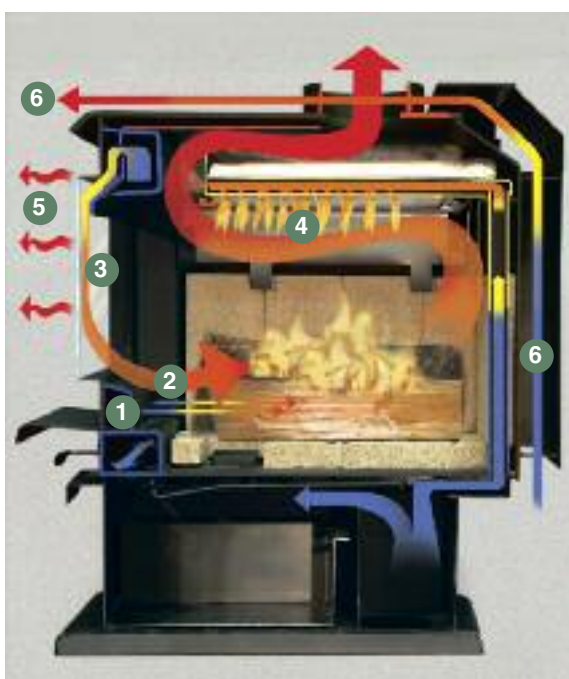
Pacific Energy's **Floating Firebox** eliminates fatigue caused by expansion and contraction during heating and cooling. Many of the firebox components are manufactured with corrosion-resistant 304 Stainless Steel*. This combination of innovation and attention to detail dramatically extends the life of your appliance.

* All models except The Vista Series



The PACIFIC ENERGY Integrated Combustion System

- ① Boost Air
- ② Main Combustion Air
- ③ Air-Wash System
- ④ Secondary Combustion Air
- ⑤ Radiant Heat
- ⑥ Convection Heat



Pacific Energy's patented **Extended Burn Technology** is available exclusively on Summit Series wood stoves and inserts. EBT regulates the flow of combustion air throughout the burn cycle and increases burn time. With EBT, your Summit wood stove or insert will burn longer between loads and give you more efficient fuel consumption.

US Patent #6,041,770



Porcelain – The Classic Finish



Porcelain is a clean and green choice. We craft our porcelain products in-house to reduce material transportation and carefully maintain our colors. Our porcelain facility is in a solvent-free, lead-free environment and uses a closed-loop reclamation system to re-use overspray.

Porcelain is colorfast, odorless, and non-toxic, and will not generate fumes or run-off during use.

This lifetime finish fuses porcelain enamel to steel, creating an inseparable bond with the flexibility and firmness of metal, the hardness of glass, and true color and finish that will not fade despite many years of intense heat, sunlight, and household cleaners.

These unparalleled properties make porcelain a beautiful and responsible choice for the finest of stove products.

We combine finely milled silica glass with color oxides and water. The precise combination of these ingredients creates the perfect consistency for spraying on our metal stove components.



Our stove parts are fabricated in-house from premium low carbon steel that is cleaned, then phosphate coated to inhibit oxidation.



A heavy layer of porcelain enamel is sprayed on the components. Over-spray is captured in a closed loop system and recycled.



Next, the coated components are hung on a conveyor and enter the forced air dryer to remove moisture.



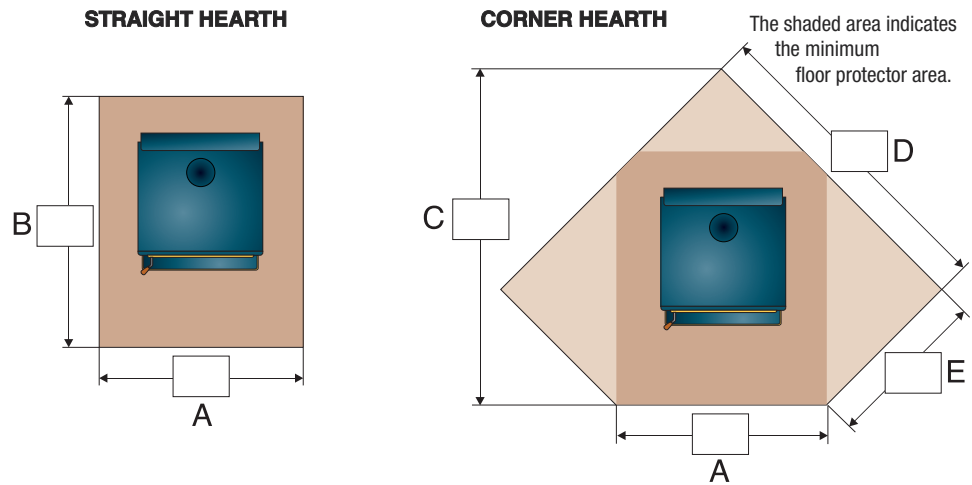
The components then enter a flow-through furnace where temperatures in the 1500°F range bind steel and enamel to create a new compound – Porcelain Steel.



MEMBER OF
PORCELAIN ENAMEL INSTITUTE

FLOOR PROTECTOR

The charts shown below give the required dimensions of floor protector sizes based on various appliance installations.



CANADA

Non-combustible ember protection must be used. (Check local building codes for acceptable construction materials.) This protection must be under the stove and must extend 18" on the firing side and 8" to the other sides.

STRAIGHT HEARTH (Extended to wall unless noted)

	VISTA / VISTA CLASSIC		SUPER 27 / STEP TOP / SPECTRUM		SUMMIT / SUMMIT CLASSIC		FUSION	
	A	B	A	B	A	B	A	B
Minimum (Not extended)	40"	43 1/4"	40"	50 1/2"	41 1/2"	51 1/8"	38 1/4"	50 1/2"
Residential, single wall, vertical connector	40"	50 1/4"	40"	54 1/2"	41 1/2"	52 1/8"	38 1/4"	56"
Residential, single wall, horizontal connector	40"	48 1/4"	40"	50 1/2"	41 1/2"	53 1/8"	38 1/4"	52"
Residential, double wall, vertical connector	40"	42 1/4"	40"	47 1/2"	41 1/2"	49 1/8"	38 1/4"	49"
Residential, double wall, horizontal connector	40"	42 1/4"	40"	47 1/2"	41 1/2"	53 1/8"	38 1/4"	49"
Alcove, double wall, connector	40"	46 1/4"	40"	52 1/2"	41 1/2"	52 1/8"	38 1/4"	54"
Mobile home	40"	47 1/4"	40"	50 1/2"	41 1/2"	50 1/8"	38 1/4"	52"

CORNER HEARTH (Extended to wall)

	VISTA / VISTA CLASSIC				SUPER 27 / STEP TOP / SPECTRUM				SUMMIT / SUMMIT CLASSIC				FUSION			
	A	C	D	E	A	C	D	E	A	C	D	E	A	C	D	E
Minimum	40"	58 1/8"	55 1/4"	27"	40"	63 5/8"	59 1/8"	30 7/8"	41 1/2"	63 5/8"	59 1/8"	30 7/8"	38 1/4"	64 7/8"	59 3/8"	32 3/8"
Residential, single wall, vert/horz connector	40"	60 7/8"	57 1/4"	29"	40"	67 7/8"	62 1/8"	33 7/8"	41 1/2"	61"	57 3/4"	28 3/8"	38 1/4"	69 1/2"	62 5/8"	35 5/8"
Residential, double wall, vert/horz connector	40"	51"	50 1/4"	22"	40"	58"	55 1/8"	26 7/8"	41 1/2"	61"	57 3/4"	28 3/8"	38 1/4"	59 5/8"	55 5/8"	28 5/8"
Mobile home	40"	58 1/8"	55 1/4"	27"	40"	63 5/8"	59 1/8"	30 7/8"	41 1/2"	62 3/8"	58 3/4"	29 3/8"	38 1/4"	65 1/4"	59 5/8"	32 5/8"

USA

Non-combustible ember protection must be used. (Check local building codes for acceptable construction materials.) This protection must be under the stove and must extend 16" to the front and 8" to the sides of the fuel loading door opening. This protection is also required under the chimney connector and 2" beyond each side.

STRAIGHT HEARTH (Extended to wall)

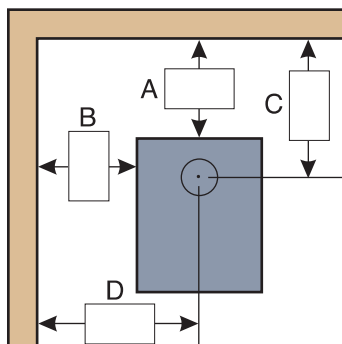
	VISTA / VISTA CLASSIC		SUPER 27 / STEP TOP / SPECTRUM		SUMMIT / SUMMIT CLASSIC		FUSION	
	A	B	A	B	A	B	A	B
Minimum	32"	33 1/4"	34"	40 1/2"	36"	40 1/2"	34"	40 1/2"
Residential, single wall, vertical connector	32"	48 1/4"	34"	52 1/2"	36"	49 1/2"	34"	54"
Residential, single wall, horizontal connector	32"	46 1/4"	34"	48 1/2"	36"	50 1/2"	34"	50"
Residential, double wall, vertical connector	32"	40 1/4"	34"	45 1/2"	36"	46 1/2"	34"	47"
Residential, double wall, horizontal connector	32"	40 1/4"	34"	45 1/2"	36"	50 1/2"	34"	47"
Alcove, double wall, connector	32"	44 1/4"	34"	50 1/2"	36"	49 1/2"	34"	52"
Mobile home	32"	45 1/4"	34"	48 1/2"	36"	47 1/2"	34"	50"

CORNER HEARTH (Extended to wall)

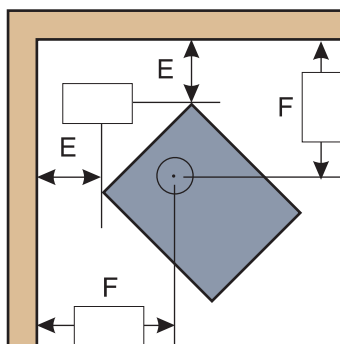
	VISTA / VISTA CLASSIC				SUPER 27 / STEP TOP / SPECTRUM				SUMMIT / SUMMIT CLASSIC				FUSION			
	A	C	D	E	A	C	D	E	A	C	D	E	A	C	D	E
Minimum	32"	53 1/4"	50 3/8"	25"	34"	49 7/8"	47 3/8"	23 1/4"	36"	53 1/4"	50 3/8"	25"	34"	51 5/8"	48 1/2"	24 1/2"
Residential, single wall, vert/horz connector	32"	58 7/8"	53"	30 3/8"	34"	65 7/8"	58 3/8"	34 1/4"	36"	59"	54 3/8"	29"	34"	67 1/2"	59 3/4"	35 3/4"
Residential, double wall, vert/horz connector	32"	49"	46"	23 3/8"	34"	55 5/8"	51 3/8"	27 1/4"	36"	59"	54 3/8"	29"	34"	57 5/8"	52 3/4"	28 3/4"
Mobile home	32"	56 1/8"	51"	28 3/8"	34"	61 1/4"	55 3/8"	31 1/4"	36"	60 3/8"	55 3/8"	30"	34"	63 1/4"	56 3/4"	32 3/4"

Note: In most practical applications the floor protection will extend to the back wall. In Canada and U.S.A. it is not required that the floor protection extend to the wall and in such cases floor protector sizes may vary slightly. Please refer to manual for details. Manuals are available on our website: www.pacificenergy.net

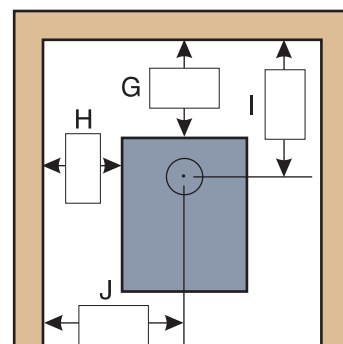
WOOD STOVES – MINIMUM CLEARANCES TO COMBUSTIBLES



STRAIGHT



CORNER



ALCOVE

RESIDENTIAL

SINGLE WALL CONNECTOR*

* Pipe shield may be required – consult local codes

MODEL	From top of stove to ceiling	Straight Installation Vertical Connector				Straight Installation Horizontal Connector				Corner Installation		Alcove Installation			
		A	B	C	D	A	B	C	D	E	F	G	H	I	J
VISTA / VISTA CLASSIC	58"	15"	14"	20 3/4"	26"	13"	14"	18 3/4"	26"	10"	22 5/8"	N/A	N/A	N/A	N/A
SUPER 27 / SPECTRUM	56"	12"	18"	22"	30"	8"	14"	18"	26"	11"	25"	N/A	N/A	N/A	N/A
SUMMIT / SUMMIT CLASSIC	54"	9"	12"	17 1/2"	24 3/4"	10"	12"	18 1/2"	24 3/4"	4"	18 3/4"	N/A	N/A	N/A	N/A
FUSION	50 1/2"	13 1/2"	19"	22"	30"	9 1/2"	15"	18"	26"	11 1/4"	25"	N/A	N/A	N/A	N/A
SUPER STEP TOP	52 1/2"	13 1/2"	18"	22"	30"	9 1/2"	14"	18"	26"	12"	25"	N/A	N/A	N/A	N/A

RESIDENTIAL

DOUBLE WALL CONNECTOR

MODEL	From top of stove to ceiling	Straight Installation Vertical Connector				Straight Installation Horizontal Connector				Corner Installation		Alcove Installation **			
		A	B	C	D	A	B	C	D	E	F	G	H	I	J
VISTA / VISTA CLASSIC	58"	7"	12"	12 3/4"	24"	7"	12"	12 3/4"	24"	3"	15 5/8"	11"	12"	16 3/4"	24"
SUPER 27 / SPECTRUM	56"	5"	14"	15"	26"	5"	14"	15"	26"	4"	18"	10"	16"	20"	28"
SUMMIT / SUMMIT CLASSIC	54"	6"	12"	14 1/2"	24 3/4"	10"	12"	18 1/2"	24 3/4"	4"	18 3/4"	9"	15"	17 1/2"	27 3/4"
FUSION	50 1/2"	6 1/2"	15"	15"	26"	6 1/2"	15"	15"	26"	4 1/4"	18"	11 1/2"	17"	20"	28"
SUPER STEP TOP	52 1/2"	6 1/2"	14"	15"	26"	6 1/2"	14"	15"	26"	5"	18"	11 1/2"	16"	20"	28"

** Please refer to manuals for minimum height and maximum depth of alcove.

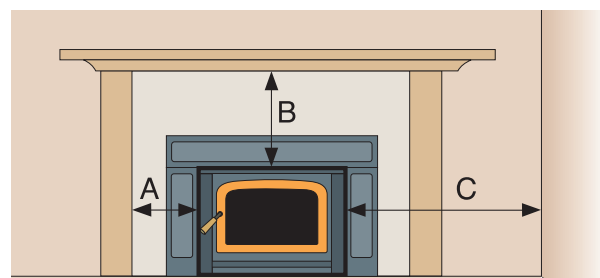
MOBILE HOME

DOUBLE WALL CONNECTOR

MODEL	From top of stove to ceiling	Straight Installation Vertical Connector				Straight Installation Horizontal Connector				Corner Installation		Alcove Installation			
		A	B	C	D	A	B	C	D	E	F	G	H	I	J
VISTA / VISTA CLASSIC	58"	12"	12"	17 3/4"	24"	N/A	N/A	N/A	N/A	8"	20 5/8"	N/A	N/A	N/A	N/A
SUPER 27 / SPECTRUM	56"	8"	16"	18"	28"	N/A	N/A	N/A	N/A	8"	22"	N/A	N/A	N/A	N/A
SUMMIT / SUMMIT CLASSIC	54"	7"	14"	15 1/2"	26 3/4"	N/A	N/A	N/A	N/A	5"	19 3/4"	N/A	N/A	N/A	N/A
FUSION	50 1/2"	9 1/2"	17"	18"	28"	N/A	N/A	N/A	N/A	8 1/4"	22"	N/A	N/A	N/A	N/A
SUPER STEP TOP	52 1/2"	9 1/2"	16"	18"	28"	N/A	N/A	N/A	N/A	9"	22"	N/A	N/A	N/A	N/A

WOOD INSERTS – MINIMUM CLEARANCES TO COMBUSTIBLES

MODEL	A	B	C
VISTA INSERT	9"	29 1/2"	9"
VISTA INSERT (With Mantel Shield)	9"	18 1/2"	9"
SUPER INSERT	6 1/2"	30"	20 1/2"
SUPER INSERT (With Mantel Shield)	6 1/2"	21"	20 1/2"
SUMMIT INSERT	8 1/2"	21"	8 1/2"





Further proof of our commitment to quality and innovation is in the limited Lifetime Warranty on all Pacific Energy products. We know of no better guarantee in the hearth industry – for your assurance of warmth, and your peace of mind.



**PACIFIC ENERGY
FIREPLACE PRODUCTS LTD.**

www.pacificenergy.net
1 888 223-0088